

NDB RWY 15

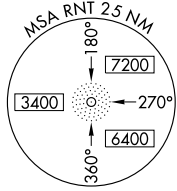
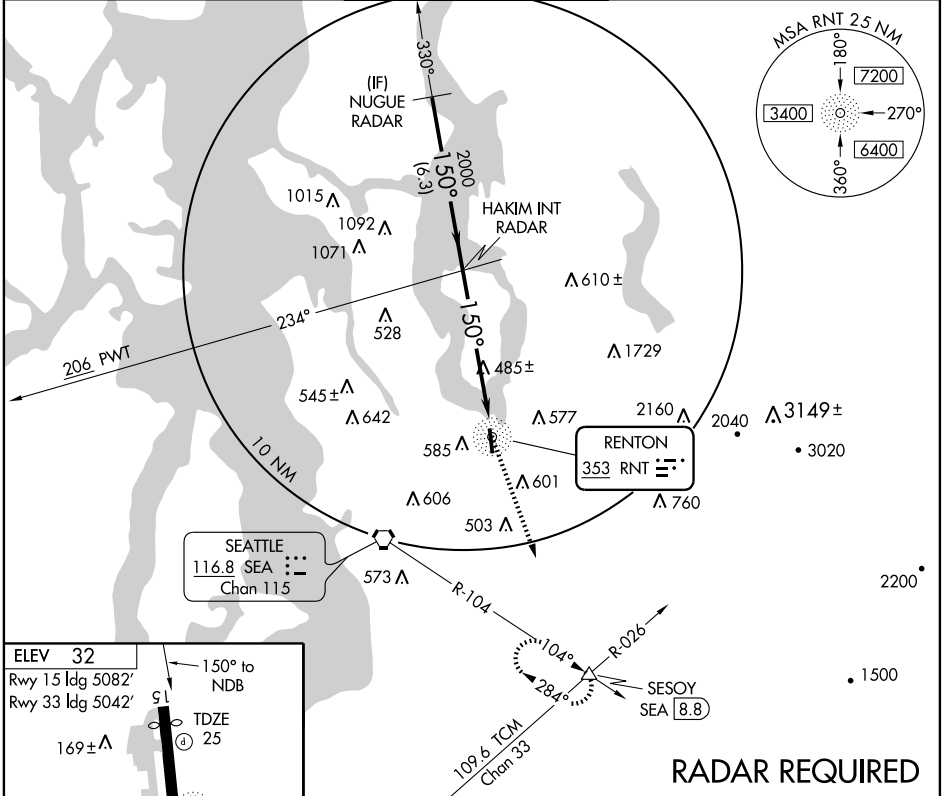
RENTON MUNI (RNT)

NDB	RNT	APP CRS	Rwy ldg	5082
353		150°	TDZE	25
			Apt Elev	32

▼ If local altimeter setting not received, use Seattle-Tacoma Intl altimeter setting.
▲ Circling NA west of Rwy 15-33

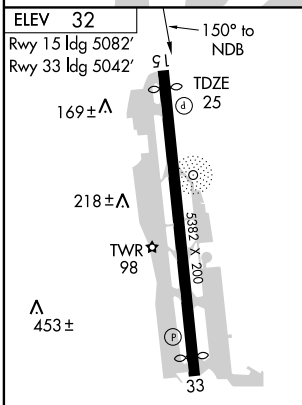
MISSED APPROACH: Climb to 5000 via 140° bearing from RNT NDB and SEA R-104 to SESOY INT and hold, continue climb-in-hold to 5000.

ATIS	SEATTLE APP CON	RENTON TOWER*	GND CON	UNICOM
126.95	119.2 284.7	124.7 (CTAF) 256.9	121.6 256.9	122.95



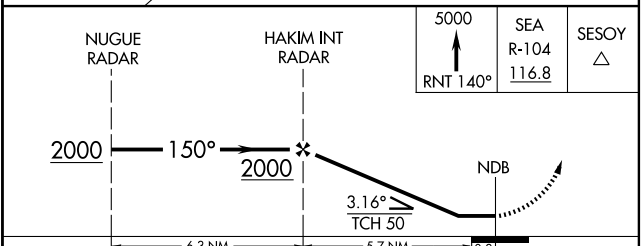
NW-1, 20 DEC 2007 to 17 JAN 2008

NW-1, 20 DEC 2007 to 17 JAN 2008



ELEV	32
Rwy 15 ldg	5082'
Rwy 33 ldg	5042'
TDZE	25
TWR	98
MIRL Rwy 15-33	134
REIL Rws 15 and 33	
Knots	60 90 120 150 180
Min:Sec	

RADAR REQUIRED



CATEGORY	A	B	C	D
S-15	860-1 835 (900-1)	860-1¼ 835 (900-1¼)	860-2½ 835 (900-2½)	860-2¾ 835 (900-2¾)
CIRCLING	880-1 848 (900-1)	880-1¼ 848 (900-1¼)	920-2¾ 888 (900-2¾)	920-3 888 (900-3)